

# ANNUAL REPORT TO THE COMMUNITY

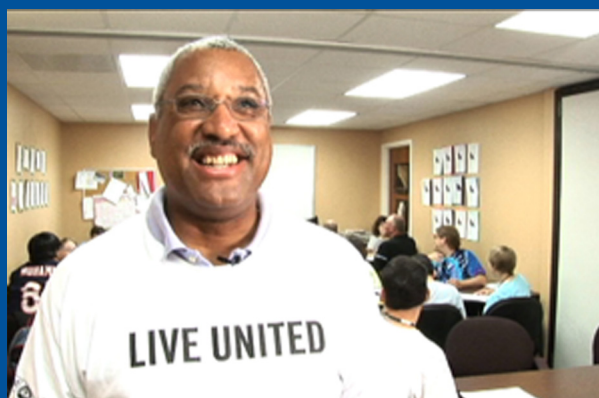
JULY 2009 to JUNE 2010

## GIVE.



## ADVOCATE.

## VOLUNTEER.



BUILDING A STRONGER COMMUNITY TOGETHER.

# LIVE UNITED

## Our Mission

United Way of Greater McHenry County enhances the quality of life for those in need in local communities by facilitating access to resources.

## Our History

McHenry County's United Way movement began with the Crystal Lake United Fund in 1965 and the United Way of Southeast McHenry County in 1967. United Way of McHenry County emerged in 1978 from a reorganized United Way of Crystal Lake. In 1981, it merged with the United Way of Cary Grove - Oakwood Hills.

The reorganization and merger were prompted by the realization that member agencies were serving residents of the entire county and that a single organization could more effectively and efficiently conduct charitable activities throughout the county.

From 1981 through 1984, our United Way participated in a regional fund-raising and allocations effort with the Chicago-based United Way/ Crusade of Mercy and United Way of Suburban Chicago. United Way of McHenry County eventually concluded that the longer term charitable support needs of McHenry County would be best served by an independent status. We withdrew from the regional organization at the end of December 1984, and have remained an independent organization since.

## Campaign History

Year	President	Allocations	Campaign Chair	Results
1978	Richard Bernotas	\$123,980	William Caldwell	\$170,000
1979	John O'Hagan	\$173,488	William Cowlin	\$221,762
1980	Frank Greenwald	\$236,820	James J. Brown	\$304,322
1981	Irma Braun	\$297,800	William Douglass	\$161,536
1982	William Douglass	\$352,040	Ronald Russell	\$194,096
1983	James J. Brown	\$360,540	Ronald Prather	\$253,660
1984	Ronald Russell	\$427,500	E. Louise Rogers	\$310,260
1985	John Lynch	\$442,160	Richard F. Farmer, Ph.D.	\$634,529
1986	Ronald Prather	\$506,039	Robert Blazier	\$821,003
1987	Robert A. Shaw	\$676,620	John Orso	\$952,114
1988	E. Louise Rogers	\$770,341	John Lillie	\$1,100,993
1989	Charles Neugebauer	\$878,206	James Swigert, Ph.D.	\$1,191,047
1990	John Lillie	\$953,272	Robert A. Shaw	\$1,370,207
1991	James Swigert, Ph.D.	\$1,100,000	Mianne Nelson	\$1,532,115
1992	Stephen Anderson	\$1,214,000	Phillip Bartmann	\$1,521,924
1993	Richard W. Abromaitis	\$1,100,000	John Stanton	\$1,600,274
1994	J. Burk McNamara	\$1,204,170	David R. Barber	\$1,705,570
1995	John Stanton	\$1,343,350	Richard W. Abromaitis	\$1,751,260
1996	David R. Barber	\$1,297,000	Diane Emerson	\$1,785,308
1997	Jan L. Hardy	\$1,339,660	Lyn Orphal	\$1,977,386
1998	Gerry Lales	\$1,509,253	W. Pete Smith	\$2,016,863
1999	Diane Emerson	\$1,585,100	Richard A. Pizarek	\$2,047,964
2000	Richard Anderson	\$1,616,236	Jan L. Hardy	\$2,114,926
2001	Charles W. Ruth	\$1,610,600	Rick Francois	\$2,133,043
2002	Richard A. Pizarek	\$1,650,000	Nina L. Moll	\$2,085,636
2003	Ann Hughes	\$1,644,960	Dennis L. Anderson	\$2,002,667
2004	Rick Francois	\$1,485,000	Abby L. Fredrick	\$1,937,356
2005	Donna A. Schaefer	\$1,512,000	Lisa Kelly	\$1,848,673
2006	Dennis L. Anderson	\$1,326,000	Sen. Pamela J. Althoff	\$1,856,212
2007	Lisa Kelly	\$1,482,000	Sen. Pamela J. Althoff	\$1,725,156
2008	Paul Georgy	\$1,338,000	Lee J. Van Syckle	\$1,810,000



December 31, 2009

Dear Friends of United Way of Greater McHenry County,

It has been an honor to have served as Board President of United Way of Greater McHenry County for the past year. Over the course of my career I have been fortunate to have been involved with many worthy causes, mentoring those who wished to grow, and aiding those needing help. At no time, nor in any circumstance have I been more personally rewarded than by the privilege to have been involved with people of the United Way. Whether you are a caregiver or provider, a volunteer of the organization, or a contributor from the community, your gifts of time and treasure are eternal, and mean everything to those in need.

Through your kind donations, United Way of Greater McHenry County supports 52 human service programs which help people in need throughout our communities. These programs are offered through 26 agencies that cover a broad range of services including senior day care and nutrition programs, child care, scouting, mental and physical health, counseling, delinquency prevention, emergency food and shelter, and many more. It is not just the community at large with the faces of the unknown for whom help is needed; indeed, more often than not it is your neighbor, your friend, or even your family member who is crying out for help – some crying out loudly, some silently hoping. This year over 77,000 people, or one of every five persons in our community, were directly helped by donations through United Way.

In addition to funding important programs, United Way of Greater McHenry County continually strives to help find solutions to a variety of social needs of the community. The Mission of our organization is one which "...enhances the quality of life for those in need in local communities by facilitating access to resources." This mission focuses our organization on certain priorities, including enhancing the quality of life, with emphasis on those in need who live in our local communities, and providing a mechanism for those individuals to receive the help they need by facilitating access to resources.

The need is ever-growing to support those crying out for help or those who are silently hoping it will come. United Way of Greater McHenry County is well suited to continue meeting this growing need. With a group of committed board members, our professional staff, agencies to meet the diverse social needs, and YOU, our community of givers, we will always strive to achieve that deserved quality of life for every person.

With warmest regards,

Gene Brickhouse

## Board of Directors

**Gene Brickhouse** *True Value Mfg.*  
Board President

\* **Cathy Itter** *Fifth Third Bank* **2009**  
Vice President, Allocations

\* **John Rung** *Northwest Herald* **2009**  
Vice President, Agency Relations

**Janelle Crowley** *City of Woodstock* **2010**  
Vice President, Finance

**Mike Nygren** *Sage Products, Inc.* **2010**  
Vice President, Marketing

\* **Mark Massoth** *Affinia Under Vehicle Group* **2009**  
Secretary

**Jodie Murphy** **2011**  
Campaign Chairperson

**Pamela Althoff** *State Senator* **2011**

**Dan Dreher** *American Community Bank & Trust* **2011**

**Joe Foley** *Corporate Disk Company* **2010**

**Chuck Follett** *Follett Digital Resources* **2011**

**Jennifer Johnson** *Exemplar Financial Network, LLC* **2010**

**Ken Koehler** *McHenry County Board Chairman* **2010**

**Sam Levey** *Medela, Inc.* **2011**

**Lesley A. Pace** *Castle Bank of Marengo* **2010**

**Andrea Pracht** *Baxter & Woodman, Inc.* **2010**

**Eric Ruth** *Alliance Contractors, Inc.* **2010**

\* **Chad Severson** *Knaack, LLC* **2009**

**Steve Slack** *Home State Bank* **2011**

**Lee J. Van Syckle** *Nissan Forklift Corporation* **2011**

**Jim Thorpe** *Crystal Lake Bank & Trust* **2010**

\* **Joe Victor** *Allendale, Inc.* **2009**

**Ryan Wormley** *Wells Fargo Advisors* **2011**

\* The five board members whose terms have expired are nominated for an additional term expiring at the end of the 2012

**Statement of Financial Position**

for year ended

Assets	June 30,2009	June 30,2008
Cash and Cash Equivalent	50,555	43,727
Receivables Net of Uncollectable Pledges Allowance	854,090	827,924
Endowment Investments	20,264	19,745
Fixed Assets Net of Depreciation & Accumulated Amortization	253,085	264,077
<b>Total Assets</b>	<b>1,177,994</b>	<b>1,155,473</b>
<b>Liabilities</b>		
Accounts Payable	891	--
Line of Credit	90,000	120,000
Donor Designations Payable to Other United Ways & CFC	77,876	70,519
<b>Total Liabilities</b>	<b>168,767</b>	<b>190,519</b>
<b>Net Assets</b>		
Unrestricted	988,963	945,209
Permanently Restricted	20,264	19,745
<b>Total Net Assets</b>	<b>1,009,227</b>	<b>964,954</b>
<b>Total Liabilities and Net Assets, End of Year</b>	<b>1,177,994</b>	<b>1,155,473</b>

**Statement of Activities**

for year ended

Revenues, Gains, & Other Support	June 30,2009	June 30,2008
Contributions Net of Donor Designations to Other United Ways	1,657,818	1,588,088
Investment Income	149	312
Miscellaneous Revenue	120	257
<b>Total Revenues, Gains, &amp; Other Support</b>	<b>1,658,087</b>	<b>1,558,657</b>
<b>Expenses</b>		
Program Services Including Allocations Paid to Partner Agencies	1,356,627	1,515,181
Fundraising	137,611	165,122
Management & General	119,576	88,698
<b>Total Expenses</b>	<b>1,613,814</b>	<b>1,769,001</b>
<b>Change in Net Assets</b>	<b>44,273</b>	<b>(210,344)</b>
<b>Net Assets, Beginning of Year</b>	<b>964,954</b>	<b>1,175,298</b>
<b>Net Assets, End of Year</b>	<b>1,009,227</b>	<b>964,954</b>

**Cash Flows**

for year ended

Assets	June 30,2009	June 30,2008
Change in Net Assets	44,273	(210,344)
Amortization	0	0
Depreciation	11,883	12,469
Increase (Decrease) in Pledges Receivable	(26,166)	127,392
Increase (Decrease) in Liabilities Donor Designations to Other United Ways	7,357	(5,827)
Accounts Payable	891	(15,485)
Line of Credit	(30,000)	120,000
Purchase of Furniture & Equipment	(891)	(4,325)
Mortgage Principal Payments	0	0
<b>Net Increase (Decrease) in Cash and Cash Equivalents</b>	<b>7,347</b>	<b>23,880</b>
<b>Cash and Cash Equivalents, End of Year</b>	<b>70,819</b>	<b>63,472</b>
<b>Interest Paid</b>	<b>0</b>	<b>0</b>

The financial results were excerpted from audited financial statements reported on by Eder, Casella & Co., independent auditors. A copy of the audit report, including the unqualified opinion issued by Eder, Casella & Co., can be viewed on our website at www.uwmchenry.org, or is available upon request at our office. In lieu of hiring staff, United Way of Greater McHenry County (UWGMC) contracts with a paid professional fund-raiser, David R. Barber, dba Community Consultants, Inc. (CCI), to assist in soliciting, collecting, distributing, and accounting for contributions and administering the day-to-day operations of our all-volunteer organization. A copy of the contract and reports regarding UWGMC and CCI are on file with the Illinois Attorney General. Copies of these materials and federal tax returns are also available on our website at www.uwmchenry.org, or available upon request at our office.

United Way of Greater McHenry County remains committed to our role as faithful stewards of the hard-earned resources entrusted to us by the people of our community. For over 30 years we have operated with the utmost in accountability and transparency to ensure that the generosity of our donors is utilized in the most effective and efficient way possible.

Funds received through our 2008 campaign are allocated for the fiscal year July 1, 2009 - June 30, 2010.

<b>Adult &amp; Child Rehab Center for McHenry County</b>		<b>Hospice of Northeastern Illinois</b>	
Home Health Services	13,500	Hospice Care	1,500
Occupational Therapy Services	12,000	Bereavement Services	3,480
Physical Therapy Services	43,020		
Speech Therapy Services	14,400	<b>Light Center Foundation</b>	
		Animal Assisted Youth Services	8,100
<b>Big Brothers Big Sisters of McHenry County</b>		<b>McHenry County Youth Service Bureau</b>	
Youth Companion Program	49,980	Alcohol & Drug Counseling	30,000
		Delinquency Prevention	123,540
<b>Boy Scouts - Blackhawk Area Council</b>		<b>Pioneer Center for Human Services</b>	
Scouting	4,800	Day Programming (Ages 0-3)	106,680
		Day Programming for Homeless Persons	32,700
<b>CASA of McHenry County</b>		Transitional Housing Services for Homeless Persons	21,600
Child Abuse and Neglect Advocacy	9,960	Transportation for Homeless Persons	31,500
		<b>Prairie State Legal Services</b>	
<b>Catholic Charities</b>		Legal Assistance	10,020
Bilingual Outreach Services	8,160		
Family & Individual Counseling	3,000	<b>The Salvation Army</b>	
Physician Referral Service	3,000	Community Center	12,000
		Community Emergency Assistance	67,980
<b>Child Advocacy Center</b>		Senior Nutrition Program	13,980
Child Abuse Victim Services	23,340	<b>Senior Services Associates</b>	
		Comprehensive Senior Services	43,980
<b>Community Action Agency</b>		Senior Companion Program	6,000
Head Start	60,000		
		<b>Turning Point</b>	
<b>Consumer Credit Counseling Service of McHenry Cty.</b>		Domestic Violence Children's Services	10,020
Financial Management & Budget Counseling	3,000	Domestic Violence Victim Support Services	30,480
Housing Couns. & Mortgage Foreclosure Prevention	3,600	Mental Health Therapy for Domestic Violence Victims	16,200
		Partner Abuse Intervention Program	13,500
<b>Faith in Action</b>		Emergency Shelter for Victims of Domestic Violence	20,700
Volunteer Services for Seniors	4,980		
		<b>USO of Illinois</b>	
<b>Family Alliance</b>		Services to Members of the Armed Forces and Their Families	3,480
Day Programming for Frail Elderly	49,980		
Day Programming for Frail Elderly Dementia Services	12,000	<b>Woodstock Early Learning Center</b>	
Day Programming for Frail Elderly Adult Day Health	13,980	Before & After School Day Care	3,000
		Day Care	12,000
<b>Family Health Partnership Clinic</b>		<b>YMCA of McHenry County</b>	
Health Care Services	45,000	Before & After School Day Care	4,980
		Family & Individual Development	4,980
<b>Family Service &amp; Community Mental Health Center</b>		Summer Day Care	21,000
Alcohol & Drug Counseling	63,300	United Way of Greater McHenry Cty. Volunteer Center	54,000
Family & Individual Counseling	139,980		
Human Services Directory for McHenry County	3,000		
<b>Friendship House</b>			
Day Care	25,020		
<b>Girl Scouts - Sybaquay Council</b>			
Scouting	3,600		
<b>Home of the Sparrow</b>			
Transitional Housing Svcs. for Homeless Persons	18,000		

**Total 2009 - 2010 Funding: \$1,338,000**

No partner agency is required to pay membership dues or have fees withheld from their allocations as a consideration for receiving funds.

Individuals who provide generous donations of time, talent and financial resources to human service organizations, civic groups, education and the arts provide a framework of strength upon which a community is able to grow, thrive and respond to the needs of its residents.

These individuals are the Pillars of their community. United Way of Greater McHenry County established its Pillars Club in 1990 to recognize such generosity.

Pillars Club contributors support the United Way concept of volunteer fund-raising and fund distribution in support of a broad range of human care services.

We are privileged to recognize the leading individual donors to our campaign in our Pillars Club. Their generosity is helping our agency partners address critical human service needs in our community.

We appreciate the continued support of present Pillars Club members and welcome new members. On behalf of United Way of Greater McHenry County, our agency partners, and the thousands of local residents they serve, thank you.

### Pillars Pinnacle \$10,000 and above

Dennis & Jackie Anderson  
Dr. & Mrs. Paul H. DeHaan  
John & Jennifer Streit  
Anonymous - 1

### Pillars Plus \$5,000 - \$9,999

Charles & Dale Follett  
James & Arlon Fuerholzer  
Michael & Judy Luecht  
Bill & Jean Rinn

### Pillars Challenge \$2,500 - \$4,999

Dave & Amy Barber  
Marlene R. Boncosky  
Doug & Karen Hodge\*  
Dr. Cary & Alice Haywood  
Julia & Robert Jessup\*  
Dr. & Mrs. Philip Lambruschi  
Roger & Elizabeth Lehmann\*  
Virgil R. & Jean T. Smith  
Michael J. & Stefanie M. Warmuth  
Cheryl B. & James T. Wormley  
Anonymous - 4

### Pillars \$1,000 - \$2,499

Brian T. Andersen  
Gene Bahlman  
Thomas & Jennifer U. Baker  
Phil & Jan Bartmann  
Robert F. Berry  
Bianchin Family  
Robert & Donna Braunecker  
Scott & Colleen Campbell  
Edward & Mariann Chess  
Dan Colby  
Robyn L. Doescher  
Gary & Rebecca Edgeton  
Terry & Susan Egan  
Joseph Foley Family  
Paul & Marilyn Georgy  
Chris & Mary Gleason\*  
Mariann Green  
Jan & Tom Hardy  
Bill Hudachek  
Ralph & Sue Iden  
Cathy Itter  
Gary P. Komosa & Jennifer L. Bornekomosa  
Ernie & Pat Link  
Erv & Louise LeCoque  
Mark & Joann Massoth  
William & Lisa Mc Nerney  
Mike & Kim Murdock  
John C. Nelson\*

Jim & Trish Overly  
Arlene Petersohn  
Rick & Marge Pizarek  
Judith M. Porter  
Khristian & Jamie Robbins  
Chuck & Helen Ruth  
Mr. & Mrs. James A. Saletta  
John & Nancy Schuette  
Chad Severson  
John & Bonnie Kay Stanton  
Joyce Stevenson  
Beverly & Larry Thomas  
William Weber  
Ryan & Gwen Wormley  
Anonymous - 22

\* New Pillars Club Member or Leadership Level in 2009 campaign

## Employee Campaign Awards

### Scope and Principles

Over 90 percent of our total campaign revenue comes from corporate and employee contributions.

United Way of Greater McHenry County's annual campaign adheres to **three basic principles:**

Charitable giving should be voluntary.

People will support United Way if they receive enough information to weigh their own giving decision, and if they have a convenient opportunity to give, such as through payroll deduction.

Individuals who contribute to United Way at their place of employment should have the opportunity to designate their pledge to their home United Way.

### Campaign Leadership Award

Businesses with employee giving of at least \$101 per person and total contributions of at least \$1,000

Based on results reported through January 15, 2010

Adult and Child Rehabilitation Center  
Affinia Under Vehicle Group  
Allendale, Inc.  
Alliance Contractors, Inc.  
Baxter & Woodman, Inc.  
Big Brothers Big Sisters  
Community Consultants, Inc.  
Consumer Credit Counseling Service  
Enterprise Transportation  
Inergy Propane - Country Gas Co.  
J & D Mechanical Industries, Inc.  
Keystone Display, Inc.  
Rohm and Haas Chemicals, LLC  
True Value Mfg.  
Wells Fargo Advisors

### Special Thanks Award

Employee campaign accounts that have achieved substantial gains above their prior year of giving

Based on results reported through January 15, 2010

Growth Standard (\$1,000 minimum campaign gift)

2008 Employee Per Capita	2009 Percent Gain
\$1 to \$14	25%
\$15 to \$29	20%
\$30 to \$59	15%
\$60 to \$100	10%

CL Graphics, Inc.  
Family Alliance  
Family Service & CMHC  
Friendship House  
Harvard Savings Bank  
The Harvard State Bank  
Knaack, LLC  
Snap-on Tools  
True Value Central Ship  
True Value Distribution Center

## Corporate Giving Awards

### Corporate Leadership Award

Businesses that made corporate contributions of \$10,000 or more to our annual campaign

Based on results reported through January 15, 2010

Affinia Under Vehicle Group  
Baxter & Woodman, Inc.  
Follett Software Company, Inc.  
Knaack, LLC  
Nissan Forklift Corporation  
TC Industries  
True Value Manufacturing

### Corporate Partnership Award

Businesses that made corporate contributions of \$5,000 or more to our annual campaign, or their per capita corporate gift was \$100 or more

Based on results reported through January 15, 2010

Alliance Contractors, Inc.  
Coilcraft  
Curran Group, Inc.  
The Harvard State Bank  
J & D Mechanical Industries  
Nicor Gas  
Nissan Industrial Engine Mfg.  
Snap-on Tools  
Rohm and Haas Chemicals, LLC

### Corporate Sponsors

Businesses that provided invaluable support of our United Way through their in-kind donations and sponsorship

Allendale, Inc.  
Biaggi's Ristorante  
Boulder Ridge Country Club  
CL Graphics, Inc.  
Corporate Disk  
Harris Bank  
Northwest Herald  
Sage Products, Inc.

# Campaign Awards

## Thanks to You Award

Nearly half of our annual campaign revenue comes from employers based outside McHenry County. The contributions come from their employees who live in McHenry County and are often augmented by corporate gifts from the employers.

Support of our local campaign by out-of-county employers is so substantial that our campaign leadership has developed a special award for out-of-county employers generating total employee and corporate giving of one percent or more of the annual campaign goal.

Based on results reported through January 15, 2010

Abbott Laboratories	HSBC
Allstate Insurance	IBM
AT&T	Meijer
CF Industries	Motorola
Fifth Third Bank	Target
Gordon Food Service, Inc.	UPS
Harris Bank	US Bank
Hollister, Inc.	Woodward Governor Co.

## Community Support Award

Local companies who have sponsored employee worksite campaigns  
Based on results reported through January 15, 2010

Alden-Hebron Community School Dist. 19	Kohl's Algonquin
Bjorkman's Ace Hardware, Inc.	Kohl's McHenry
Cary Elementary School Dist. 26	Light Center Foundation
Cary Park District	McHenry Community High School Dist. 156
Castle Bank	McHenry County Government Center
City of Marengo	McHenry County Youth Service Bureau
City of Woodstock	McHenry Township
Community Action Agency	Michling Hofmann Vinton Plaza & Wick, PC
Crystal Lake Elementary School Dist. 47	Nissan Forklift Corporation
Crystal Lake High School Dist. 155	Nissan Industrial Engine Mfg.
Danaher Motion	Pioneer Center for Human Services
Deluxe Corporation	Prairie State Legal Services
Exemplar Financial Network, LLC	RAE Corporation
Family Health Partnership Clinic	The Salvation Army
First Midwest Bank McHenry	S.E.D.O.M
Follett Software Company, Inc.	Senior Services Associates
Hampton Inn	TC Industries, Inc.
Home of the Sparrow	True Value Transportation HQ
Home State Bank	Turning Point, Inc.
Hospice of Northeastern Illinois	Vaughan & Bushnell Mfg. Co.
Huntley Fire Protection District	Village of Cary
Huntsman	Woodstock Christian Life Services
Johnsburg School Dist. 12	YMCA of McHenry County

# Paul Schipp Memorial Volunteer of the Year Award

## Past Recipients

- 1980** John Orso, Northern Illinois Gas Company
- 1981** Norbert Coonen, American Can Company
- 1982** Larry Bergmann, Illinois Bell Telephone Company
- 1983** Roberta Wiltse, Pioneer Center
- 1984** William Grogg, Jr., The Quaker Oats Company
- 1985** George Huffman, Ph.D., The Quaker Oats Company
- 1986** Roderick MacFarlane, Warner Electric Brake Company MCSO
- 1987** Albert Young, Village of Cary
- 1988** Nancy Russell, Watlow Gordon Company
- 1989** Phillip Bartmann, Radicom, Inc.
- 1990** Jim Fairbanks & Cherie Haselgruber, Precision Twist Drill Company
- 1991** Hugh Engelman, Crystal Consulting Company
- 1992** Dorothy Lobitz, Cotter and Company
- 1993** Kenneth P. Grubb & Kathy Haste, Culligan Water Conditioning
- 1994** Diane Emerson, ComEd
- 1995** Darlene Fuller, Arnold Engineering
- 1996** Richard A. Pizarek, Hydraulics, Inc.
- 1997** Richard F. Holton, Morton International, Inc. - Ringwood
- 1998** Bev Thomas, Baxter & Woodman, Inc.
- 1999** Kelli Forbes, Follett Software Company, Inc.
- 2000** Mike Fogle, Castle Bank Harvard & Mark Massoth, Dana Brake & Chassis
- 2001** J. Scott Campbell, Family Service & Community Mental Health Center
- 2002** Sheri Rankins, Keystone Display, Inc.
- 2003** Rob Revak, SeaquistPerfect
- 2004** Bev Thomas, Baxter & Woodman, Inc.
- 2005** Lesley A. Pace, First National Bank of Marengo
- 2006** Pat O'Hagan, Follett Library Resources, Inc.
- 2007** Joan Holter, TC Industries, Inc.
- 2008** Ted Pillow, Affinia Under Vehicle Group

Knowledgeable, caring people are the heart of every successful organization, including our United Way, but United Way of Greater McHenry County is a unique business because it is 99% volunteer-driven and gives its earnings only to local charities.

Our largest, most visible volunteer activity is our annual fund-raising campaign. Several hundred volunteers perform key campaign roles involving thousands of hours of service that include planning, volunteer recruitment, account solicitation, and follow-up support.

United Way of Greater McHenry County annually recognizes an outstanding campaign volunteer by presenting the Paul Schipp Memorial Volunteer of the Year Award.

Award recipients exemplify high standards of integrity and volunteer service as displayed by Paul Schipp.

A dedicated United Way of McHenry County volunteer, Paul Schipp was a man who served his family, church, employer, and community with consistent dedication. When Paul died in January 1992 at the age of 37 from complications following a massive stroke, the United Way of McHenry County Board of Directors renamed the Volunteer of the Year Award to honor his memory.

## UNITED WAY OF GREATER MCHENRY COUNTY ENDOWMENT FUND

Through the United Way of Greater McHenry County Endowment Fund, your gift helps our community care for those who need help today. More importantly, it helps those who will need assistance in the future. This fund allows our organization to remain a vital and permanent organization that will carry on the spirit and tradition of philanthropy in our community for many years to come.

### Bequests & Gifts

Richard & Theresa Abromaitis	Robert & Rochelle O'Hagan
Richard Anderson	LeRoy & Marion Olsen
Gail Baumgarner	John & Marilyn Orso
Country Gas	Rohm & Haas-Ringwood
Paul & Marilyn Georgy	Robert & Jane Rule
Thomas & Janice Hardy	J.M. & D.L. Saban
Richard & Mary Lou Holton	Dave & Judy Schmidt/Dave Schmidt Const.
Kemper Insurance	Jeanne & Ron Schroeder
Gary Komosa	Virgil & Jean Smith
Ron Leigh Bequest	Philip Weyna
Lois Madsen	Albert & Linda Young
Mark & JoAnn Massoth	
Doug & Edna McCall/Flag Store	
Nina Moll	
Kathleen P. O'Hagan	

### In Memoriam

Robert H. Barber, Sr.  
Irma Braun  
Emily Brickhouse  
Kathy Budruwiet  
William Douglas  
John J. Eder, Jr.  
Delphine Fields  
Edward Hennegan  
Amelia Kampwerth  
King L. Klopfenstein  
Therese Marie Laudick  
Edward W. Luecht  
Paul Miller  
John P. O'Hagan  
Larry Offermann  
Catherine Oost  
Major Griffith Townsend Parry  
Robert Rule  
Dennis Simpson  
Ethel Stahnke  
MaryJane Woodman

# 2009 Volunteers

Sue Adelmann	Marta Dhein	Suzanne Hoban	Sam Levey
Pam Allen	Jenny Diedrich	Karen Hodge	Joe Like
Pamela Althoff	Robyn Doescher	Josh Hoesch	David Linder
Keith Anderson	Geri Dolan	Joe Hoffman	Rich Lipinsky
Kay Rial Bates	Beverly Dow	Rylee Hollensbe	Carol Louise
Lynn Bauer	Sue Draffkorn	Joan Holter	Sue Low
Ron Baughman	Dan Dreher	Bill Hommrich	Eugene Lowery
Ellen Bauman	Deb Eberspacher	Frank Hosticka	Michael Luecht
Margaret Behles	Gary Edgeton	Ron Hoxsey	Karen Lukasik
Donna Below	Mary Ellison	John Hoyle	Ron Lukasik
Bob Berry	Jenny Engelhard	Devon Hubbard	Allen Mangrum
Pam Bialas	Jeff Falconer	Bill Hudachek	Nick Manusos
Maureen Biederer	Sandi Farley	Ann Hughes	Bud Marlewski
Bill Biedermann	Jane Farmer	Linda Hunter	Chris Marrs
Donna Bieschke	Lynn Fiala	Mike Hutton	Kathleen Martinez
Don Bis	Deborah Finn	Jason Hyde	Kathleen Massat
Steve Bjorkman	Joni Fisher	Jan Hyser	Mark Massoth
Lynn Blaker	Shari Fitzgerald	Ralph Iden	Brian Mattick
Bob Blazier	Joe Foley	Ginger Ingole	David Matts
Anne Bockelmann	Chuck Follett	Cathy Itter	Dan McCaleb
Brad Boncosky	Rick Francois	Bonnie Jacobson	Ellen McCue
Brenda Bono	Dee Franz	Beth Jaremus	Dave Miklos
Chris Bordis	Tammy Fritch	Jack Jeffers	Dawn Miller
Jan Bosman	James Fuerholzer	Norma Jensen	Lisa Mitchell
Joel Bosman	Carol Fulton	Julia Jessup	Derik Morefield
Rita Boulden	Kathleen Gentes	Robert Jessup	Elvira Moreno
Clare Bourne	John Georgy	Dan Johnson	Nancy Moriarity
Diana Braun	Marilyn Georgy	Jennifer Johnson	Michael Morris
Nicole Braun	Paul Georgy	Kemberly Dailey-Johnson	Wendy Moylan
Gene Brickhouse	Steve Georgy	Tina Jones	Mike Murdock
Dana Briscoe	Rob Getty	Susan Kahles	Jodie Murphy
Debbie Bromley	Flo Giba	Char Kaiser	Sue Murphy
Arthur Budelier	Julie Gilmour	DaNeal Keane	Rich Naponelli
Scott Campbell	Claire Glenn	Lisa Kelly	Kitty Nash
Michael Carlson	Barb Gold	Nancy Kinney	Saurabh Negi
Lisa Carson	Edward Gorecki	Ed Kisman	Paulette Nelson
Dave Cassesse	Jeanese Graham	Edna Kisner	Rita Nemeth
Farlin Caufield	Mary Granado	Bob Klein	Stephen Newton
Janet Cederlund	Nancy Grandinetti	Gwen Koehler	Al Nordengren
Christy Chambers	Deej Grap	Ken Koehler	Peg Nordengren
Amber Chess	Mariann Green	Cynthia Komarek	Melissa Norman
Sue Christensen	Kim Gregorio	Gary Komosa	Tim Norris
Jason Clark	Carol Grom	John Kretchmer	Mike Nygren
Tim Clifton	Sue Grossinger	Lawrence Kreul	Karen O'Hagan
Justin Cressler	Bruce Guillan	Chris Krug	Jim O'Leary
Sherri Cronin	Frank Guzzo	Vivian Kulik	Steve Olsen
Janelle Crowley	Sean Haley	Joe Kvidera	Alex Olvera
Tim Curran	Shane Halverson	John Labaj	Lyn Orphal
Teresa Daily	Jan Hardy	Sue Lafontaine	MaryAnn O'Steen
Bob Dalton	Matt Harned	Julie Larson	Art Osten
Cathy Danca	Greg Harrah	William Layer	Sharon Osterberg
Jackie Daugherty	Juliana Hatfield	Susan Layher	David Overbeeke
Cameron Davis	Julie Hendrickson	Deb Hall Lefevre	Trish Overly
Dave Davis	Jim Henley	Dana Lehl	Lesley Pace
Cheryl Dawson	Dan Herman	Roger Lehmann	Jim Pahno
Paul DeHaan	Kris Hirsch	Melissa Lesser	Lori Parrish

Tricia Pechotta	Cindy Thomson
Kathy Pelz	Jim Thorpe
Mark Perry	Angela Thuma
Virginia Peschke	David Tomlinson
Ted Pillow	Ray Tower
Marge Pizarek	Bill Travelstead
Steve Plein	Patty Vavrik
Kathleen Plinske	Thomas Vicek
Barbara Pobursky	Joe Victor
Judith Porter	Josephine Voigt
Andrea Pracht	Paul Voigt
Judy Prehn	Shiela Walden
Kim Qualls	Pearl Waldspurger
Carlos Quinones	James Wales
Deb Rabine	Laura Walker
Travis Ralph	John Wall
Sheri Rankins	Patrick Walsh
Anil Rathi	Chester Ward
Gary Reece	David Ward
Kirk Reimer	Mary Warren
Dick Resseguie	Brenda Webb
Pat Rinker	Nicole Weber
Marjorie Rittmer	William Weber
Maggie Rivera	Kelly Wessel
Khristian Robbins	Phil Weyna
Tammy Robbins	Kathy Wilhoit
Jose S. Rodriguez	Terry Willcockson
Roberta Rogers	Natalie Wishne
Thom Rooney	Jennifer Wolgram
John Rung	Cheryl Wormley
Eric Ruth	Ryan Wormley
Helen Ruth	Chip Yager
Gerald Sagona	Judi Zaplatynsky
Jason Schaumburg	Cheryl Zielke
Rick Schildgen	
Deanna Schmidt	
Jean Schreiber	
Stephen Schreiner	
Kevin Schroeder	
Mary Schweder	
Janet Schweig	
Tara Semenchuk	
Chad Severson	
Duff Seyller	
Shari Shaver	
Sue Short	
Steve Slack	
Emily Smith	
Mike Split	
John Stanton	
Roscoe Stelford	
Brieanna Sterne	
Nancy Strauss	
Dave Swislow	
Lee J. Van Syckle	
Kathy Tegtmeyer	

# 2009 Annual Meeting Minutes

Notice having been duly provided, 156 volunteers and donors gathered for the 2009 Annual Meeting & Campaign Recognition Dinner at Boulder Ridge Country Club in Lake in the Hills, Illinois, on February 3, 2009.

United Way President Paul Georgy welcomed everyone and an invocation was provided by Captain Vicky Horton from The Salvation Army Golden Diners.

Following dinner, President Georgy called the meeting to order at 8:05 p.m. and asked for a motion, duly made, seconded, and passed by voice vote without dissent, to approve the minutes of the 2008 Annual Meeting which appeared on the last page of our annual report. Gene Brickhouse presented Mr. Georgy with a plaque as a token of appreciation for his service as board president. Mr. Brickhouse also recognized David Geiser as the only other retiring board member. Mr. Brickhouse then presented the report of the Nominating Committee. At Mr. Georgy's request, motion was made, seconded, and approved by voice vote without dissent to elect the following individuals to serve on the Board of Directors:

Expired Board Members with Three-Year Term Extensions expiring at the end of 2010	New Board Members with Terms expiring in either 2009 or 2011
Senator Pamela Althoff Gene Brickhouse – True Value Mfg. Dan Dreher – American Community B&T Charles R. Follett, Jr. – FDR Mike Luecht – ML Realty Partners Steve Slack – Home State Bank Lee Van Syckle – Nissan Forklift Ryan Wormley – Wachovia Securities	Sam Levey – Medela (2011) Chad Severson – Knaack, LLC (2009) Joe Victor – Allendale, Inc. (2009)

President Georgy shared his thoughts on the “State of Our United Way,” including the economy and its effect on charitable giving and on the rising demand for additional services.

Lee Van Syckle, 2008-09 General Campaign Chairperson, thanked campaign volunteers and donors and recognized everyone who worked on the 2008 campaign. Following is a summary of campaign highlights:

- More than 100 local companies conducted local worksite campaigns;
- Nine local restaurants participated in the third annual United We Dine promotion;
- There were 8 partner agencies with increases in participation;
- There were 7 companies that posted exceptional increases in employee giving and/or employee participation;
- There were 3 long-established campaigns that raised more than \$20,000 in combined employee and corporate gifts;
- There were 3 long-established campaigns that raised more than \$30,000 in combined employee and corporate gifts;
- There were 3 long-established campaigns that raised more than \$50,000 in combined employee and corporate gifts;

A slide presentation was given recognizing this year's leading campaigns.

Mr. Van Syckle announced the campaign results to date. The Out of County campaign sector total of \$130,937 was 18% of the \$700,000 goal. The Local campaign sector total reached \$958,328 and was 91% of our local goal. As of noon that day, the campaign total reached \$1,089,264 which is 62% of our total goal of \$1,750,000. Mr. Van Syckle expected this total to rise as additional accounts turned in results and others ran first-time campaigns.

Following the campaign results, Orion Samuelson provided his perspective on the importance of investing in our local community. Mr. Samuelson is a well known national radio personality. His thoughts on why it is important to support the local health and human service sector provided everyone with a different look at philanthropy.

The Paul Schipp Memorial Volunteer of the Year Award was presented by Mr. Van Syckle to Ted Pillow for his dedicated volunteer service. Mr. Pillow was a first year volunteer Employee Campaign Manager for Affinia. He and his team generated one of the largest increases ever in campaign giving. His results increased total contributions by 175% and nearly \$50,000.

Mr. Van Syckle thanked volunteers and donors for all of the hard work they put in to make these results possible. President Georgy presented Mr. Van Syckle with a recognition award as a token of appreciation for his dedicated campaign leadership. There being no further business, President Georgy adjourned the meeting at 8:52 p.m.



Janelle Crowley  
Secretary

Produced and distributed by:



**United Way  
of Greater McHenry County**

4508 Prime Parkway  
McHenry, IL 60050  
p: 815.363.1377  
f: 815.363.1878  
[www.uwmchenry.org](http://www.uwmchenry.org)